



SAND
ACADEMIES TRUST
Supporting Achievement Nurturing Development

Annual Report

2022 – 2023

Welcome

We are SAND Academies Trust, a Gloucestershire based mixed multi-academy trust. We are focussed on supporting our schools to enable the best education and support possible for our pupils, families, parents and carers.

As an organisation, we exist for the benefit of all our young people, no matter their background or circumstance. We have ensured that we have a stable financial position and a sustainable future in which to invest in our children's education, wellbeing and life chances.

Our overarching focus is always on the education of our children and young people. As a Trust we provide substantial continual training and outreach, alongside responsive central services to support our

schools. This enables us to invest in the quality of education and also in our teams development, our buildings and wider infrastructure.

Lastly, we are striving to support a culture that promotes our common purpose clearly and where the individual character and personality of our schools are maintained. Nothing we do would be possible without the support of our incredible teams. In every role, they work hard to give our children and young people the very best education in the County – we never take their dedication for granted.

Martin Hughes,
Chief Executive Officer

Kerry Brimfield,
Chair of Trustees



OUR COMMITMENT

We take our responsibility for the education, safety and wellbeing of children and young people very seriously and are committed to playing our part in developing a quality educational provision across Gloucestershire, and beyond.

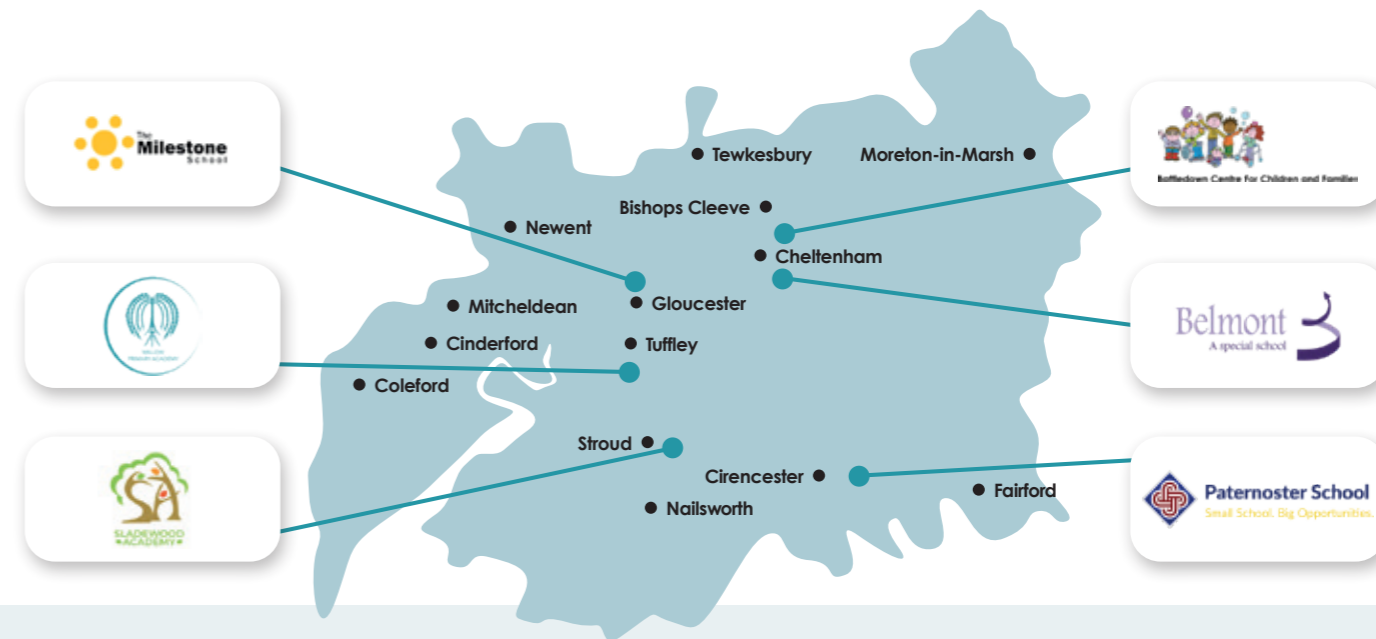
Our Journey

SAND Academies Trust was incorporated in June 2019 with The Milestone School and Paternoster School in the Trust. Throughout 2020 and 2021, the Trust grew to include Battledown Centre for Children & Families, Belmont School and the first mainstream school, Willow Primary Academy.

In 2022, the Trust were delighted to be approved as the sponsor for a new special school in Stroud, Sladewood Academy. The school will open to pupils in September 2023.

We will continue to grow the Trust over the coming years with the intention of becoming a mixed-phase MAT of choice in Gloucestershire.

GROWTH OF THE TRUST WILL ALWAYS BE THE RIGHT SCHOOL AT THE RIGHT TIME – PROVIDING A POSITIVE IMPACT FOR PUPILS, PARENTS AND OUR TEAMS.



JUNE 2019

SAND Academies Trust is incorporated with The Milestone School as the sponsor academy. A special school for pupils aged 2-16 years in Gloucester currently with 320 children on roll.



JUNE 2019

Paternoster School also becomes part of the Trust. A special school in Cirencester for pupils aged 4-16 years currently with 66 children on roll all with SLD and PMLD.



APRIL 2023

The Trust welcomes Battledown Centre for Children and Families. A special school for pupils aged 2-11 years in Cheltenham covering a whole range of additional needs



JULY 2020

Belmont School is based in Cheltenham and can accommodate up to 180 children from 4-16 years.



APRIL 2021

Willow Primary Academy is the first mainstream primary school to join the Trust. The school is based in Gloucester and has an attached Specialist Resource Centre.



SEPTEMBER 2023

The Trust will open a new special school, Sladewood Academy, in Stroud in September 2023. The school is for primary aged children and will cater for 60 pupils once it is full.

Our Trust

THE MILESTONE SCHOOL

We are an outstanding school for pupils with special needs aged 2-16 years based in Gloucester. Our aim is to remove obstacles and enable access to learning for each child through an individualised pupil-centred approach according to his or her needs. We care for around 320 pupils. We aim to develop life and independence skills to each child's full potential in order to prepare them for adulthood, through providing personalised and appropriate support. We are incredibly proud of our school, and the pupils and staff who create a positive, productive and welcoming environment.

BELMONT SCHOOL

Our students join us with a wide range of learning needs and bring with them a wonderful mix of interests, personalities, and talents. At Belmont, we offer a holistic approach to education, wrapping creative and specialist teaching around social and emotional wellbeing. While learning with us, the children are cared for, valued, challenged and supported to achieve the best possible outcomes during their time at Belmont and beyond.



BATLEDOWN CENTRE FOR CHILDREN & FAMILIES

We help and encourage each of our unique pupils to be "the best that they can be". We strive to create an outstanding, exciting and uplifting learning environment. Coming to school each day our pupils know that they are entering the kind, caring, happy environment that is Battledown Centre for Children & Families.

PATERNOSTER SCHOOL

Paternoster has a caring, happy and friendly environment, that is supportive to pupils and their parents. We celebrate and value all pupil achievements, however small, and support them in progressing onto the next stage of their development in all areas. We are constantly striving to improve what we offer for the benefit of our pupils.

SLADEWOOD ACADEMY

Sladewood Academy is a special school providing education for 60 pupils aged 4-11 years with Moderate and Additional Learning Difficulties. The school is in the pre-opening phase, with an intended opening date of September 2023. The school will open with an intake of 32 pupils, growing over 3 years to a full capacity of 60 pupils.

WILLOW PRIMARY ACADEMY

Willow Primary is a mainstream school with an attached Specialist Resource Centre catering for 210 pupils in total. Our aim is to make every one of our pupils feel valued and successful, to achieve and understand themselves as individuals. The children are at the heart of everything we do, developing academically and socially in our friendly environment which offers safety and security whilst nurturing confidence and independence.

Our Trust

OUR CENTRAL SERVICES TEAM

Our experienced and skilled Central Trust team provide business and operational expertise and support for all schools. Having centralised processes enables schools to have the time and resources to focus on their key priorities and aims in respect of the educational offer to their pupils.

TRAINING & OUTREACH

This service aims to not only provide training and support for our own Trust schools, but also to identify and co-ordinate expertise using best practitioners

to play a greater role in recruiting and training new entrants to the profession, lead peer-to-peer professional and leadership development, identify and develop leadership potential through succession planning and talent management and provide support for other settings and parents/carers.

We provided well over 2,000 hours of training and development for our teams and worked closely with many schools in Gloucestershire, sharing our expertise and learning from each other. This area is one of the most significant areas that the Trust will grow and develop over the coming years.

GOVERNANCE

We have an experienced and dedicated board of Trustees who are supported by a knowledgeable Governance Professional. Each school has a Local Advisory Board (LAB) who play a key part in the governance structure by supporting Trustees to fulfil their strategic functions at a local level and within the powers delegated to them.



SAND
ACADEMIES TRUST
Supporting Achievement Nurturing Development

NUMBER OF SCHOOLS

6



STAFF AT TRUST

556



OFSTED OUTSTANDING

2



CPD & TRAINING HOURS A YEAR

2224



PUPILS UNDER OUR CARE

897



Highlights from the year

- ✔ Towards the end of the academic year The Chamwell Centre became wholly owned by the Academy Trust. The Centre remains a registered Charity and will continue to focus on providing hydrotherapy and play for our pupils, but we will also look at the Centre becoming at the heart of the Community.
- ✔ Willow Primary had an independent inspection that demonstrated how the school has improved under the Academy's wing coupled with pupil numbers increasing.
- ✔ Our annual all school trip to Cattle Country was a huge success with over 800 pupils spending the day at the park. It was wonderful to see the interaction with all our schools and special thanks go to all our teams, parents, volunteers and supporters for making it a fantastic day.



- ✔ Our schools have actively engaged with our parents, the local community and stakeholders during the year with many events and celebrations. The commitment of our teams and quality provision mean our schools are **“Schools of choice”** in our County.
- ✔ Despite challenges regarding funding, SAND remains financially stable. This enables us to invest in the education of our pupils and with our incredible supporters, such as Pied Piper and the Friends network, adapt and develop our buildings, playgrounds and transport options.
- ✔ Recruitment has been a particular success, with renewed focus we are filling vacancies and attracting new staff. We will work hard this coming year making the Trust a recognised **“Employer of Choice”** in the County.
- ✔ Our training and outreach service has seen a significant increase in requests for support from our colleagues in the mainstream sector. All our schools actively assisted colleagues with training regarding helping children with special educational needs.
- ✔ Sladewood Academy in Stroud will be opening in September 2023, providing education for 60 pupils aged 4-11 years with Moderate and Additional Learning Difficulties



What do we do with our funding?



HOW WE USE OUR FUNDING (£MILLIONS)

Salaries of all our teams	£15,5m	88%
Buildings, Utilities and Security	£740k	4%
School Resources & Equipment	£820k	5%
Overheads and administration	£650k	4%
Direct Costs to the Academy	£17,7m	

Based on unaudited forecast financial spend for the academic year : 2022-2023

- Salaries of all our teams
- Buildings, Utilities and Security
- School Resources and Equipment
- Overheads and administration

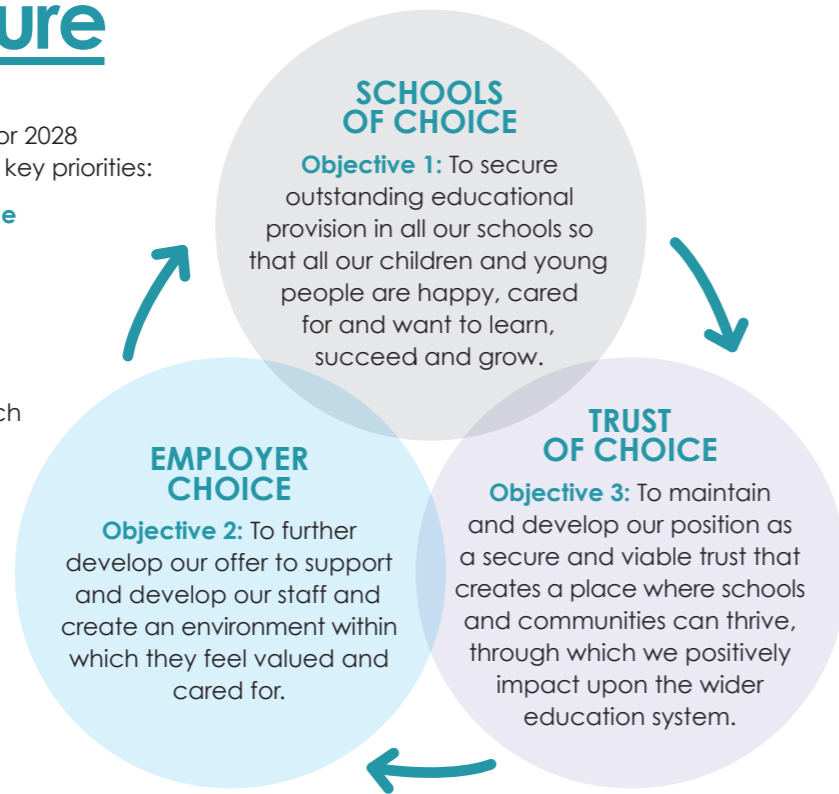
Our plans for the future

We will deliver on our vision for 2028 through the delivery of three key priorities:

- ✔ **to be the schools of choice**
- ✔ **the employer of choice**
- ✔ **and the trust of choice**

In order to achieve the strategic vision, we will focus on three key objectives, which capture our strategy for 2023 to 2028.

Each objective has associated goals and key performance indicators against which these targets will be measured.



Finally

Thank you to all our staff, parents, carers and pupils for making this Trust an incredible place.

Special thanks also go to our Local Advisory Board members, Friends of each school who have tirelessly worked with the Headteachers and charitable organisations such as The Pied Piper, whose continual support has, undoubtedly, helped many children in our schools and the county.



SAND

ACADEMIES TRUST

Supporting Achievement Nurturing Development

www.sandmat.uk

Registered in England: Company number 11968610